



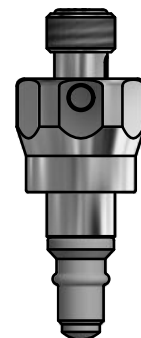


VALVE HEAD W9 TYPE K

ART. NO. 600042

GENERAL

-  The KEOFITT CLASSIC W9 Sampling Valve is the original and leading sterilizable sampling valve in the world. Used in all industries for decades. More than 320 standard valve configurations. Unique serial no. for each valve*.
-  The sampling valve can be used for any process sampling for microbiological, chemical and/or physical analysis.
-  **Cleaning/sterilizing:** Between batches: Valve in open position: Cleanable by means of CIP using the detergent solution suitable for the actual process media. Between samples: Valve in its normal closed position: cleanable by CIP as "Between batches" or the valve may be sterilized by means of steam SIP or chemical SIP using a procedure appropriate to the actual circumstances. For further advice, please contact Keofitt. Autoclavable.
-  Designed for sampling of liquids with a viscosity of up to approx. 1.000 cP containing no particles larger than Ø3 mm. Sampling of more viscous liquids is possible, only will it take longer (depending on process pressure).



FEATURES

-  Installation: Threaded socket connection M22x1.5
-  Operation: Key ring handle - not included (#600076)
-  Membrane: Silicone (#600051)

CERTIFICATION*

· EU EC 1935/2004 · EU EC 2023/2006 · DK No 681 25/05/2020 · 3-A Certificate · ATEX 2014/34/EU · PED 2014/68/EU · FDA CFR 21 §177.2600 · USP Class VI · Keofitt DoC

TECHNICAL DATA

Material (process contact)

· Membrane SILICONE, GREY (#600051)

Material (without process contact)

· Steel parts AISI 303 (1.4305) / AISI 316L (1.4404)

Membrane

· Article SILICONE, GREY (#600051)
 · Certification* · EU EC 1935/2004 · EU EC 2023/2006
 · DK No 681 25/05/2020 · FDA CFR 21 §177.2600 · USP Class VI · REACH · RoHS · ADI Free · Keofitt DoC

Pressure & Temperature

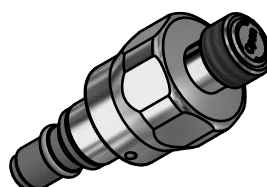
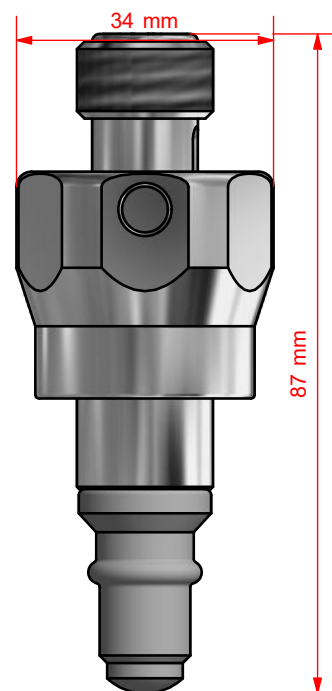
· Pressure 0 - 10 bar / 0 - 145 psi
 · Temperature 1 - 130°C / 34 - 266°F
 · Air supply -

Net Weight

· kg/lbs 0.207 kg/0.455 lbs

Spareparts

776041 PARTS FOR W9 HEAD 600041/42/43/47



*For further information and download please visit www.keofitt.dk

KEOFITT CLASSIC W9 SAMPLING VALVE - BODIES



CONNECTION BODIES							
	VARIANT Ø50	VARIANT Ø68	MINI CLAMP	CLAMP 1" & 1½"	CLAMP 2"	CLAMP 3"	TREAD
	850008	850009	850036	850021	850003	850004	M28X1.5 850031 DIN 11851 DN 10 850040
	850020	850013	850039	850022	850005	850026	
	On request	On request	On request	850024	On request	On request	850037 M28X1.5
	On request	On request	On request	On request	On request	On request	

W9 BODIES	WELDING BODIES				IN-LINE HORIZONTAL
	TANK WELDING Ø28	PIPE WELDING 1"	PIPE WELDING NW25	IN-LINE VERTICAL	
	850001	850011	850014	850027*	850028*
	850006	850010	On request	On request	On request
	850015	850016	850018	On request	On request
	850007	850019	On request	On request	On request

* ON REQUEST ONLY!