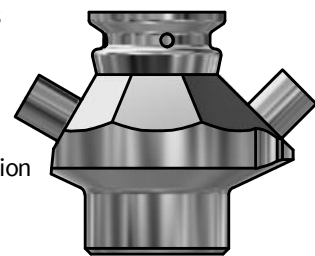


# SESAME BODY TYPE T WELDING ENDS

ART. NO. 890007

## GENERAL

- The KEOFITT SESAME Sampling Valve is our patented dual-seat sampling valve. Unique in the market, it eliminates dead-leg during sampling while incorporating steam supply control. Unique serial no. for each valve\*.
- The sampling valve can be used for any process sampling for microbiological, chemical and/or physical analysis.
- Cleaning/sterilizing: Between batches: Valve in open position: Cleanable by means of CIP using the detergent solution suitable for the actual process media. Between samples: Valve in its normal closed position: cleanable by CIP as "Between batches" or the valve may be sterilized by means of steam SIP or chemical SIP using a procedure appropriate to the actual circumstances. For further advice, please contact Keofitt.
- Designed for sampling of liquids with a viscosity of up to approx. 1.000 cP containing no particles larger than Ø3 mm. Sampling of more viscous liquids is possible, only will it take longer (depending on process pressure).



## FEATURES

- Installation: Tank welding
- Operation: Depending on choice of valve head
- Inlet / Outlet: 1/2" Welding Liner acc. ASME BPE-2012
- Membrane: Depending on choice of valve head

## CERTIFICATION\*

· EU EC 1935/2004 · EU EC 2023/2006 · DK No 681 25/05/20 · 3-A Certificate · 3.1 Material Certificate · Ra Certificate · ATEX 2014/34/EU · PED 2014/68/EU · Keofitt DoC

## TECHNICAL DATA

### Material (process contact)

- Steel parts AISI 316L (1.4435 BNII)

### Material (without process contact)

- Steel parts AISI 316L (1.4404)

### Surface Treatment

- Outside Electropolished  $Ra \leq 1.2 \mu m$
- Inside (wetted surface) Electropolished  $Ra \leq 0.5 \mu m$
- Process connection Electropolished  $Ra \leq 0.5 \mu m$

### Pressure & Temperature

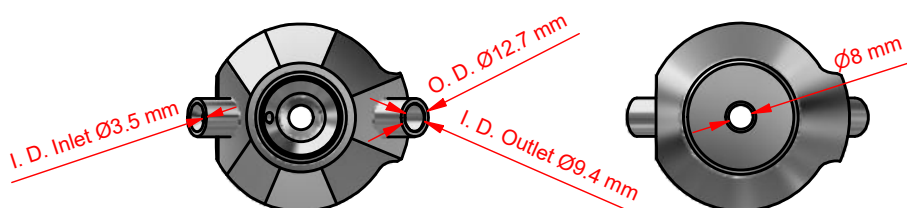
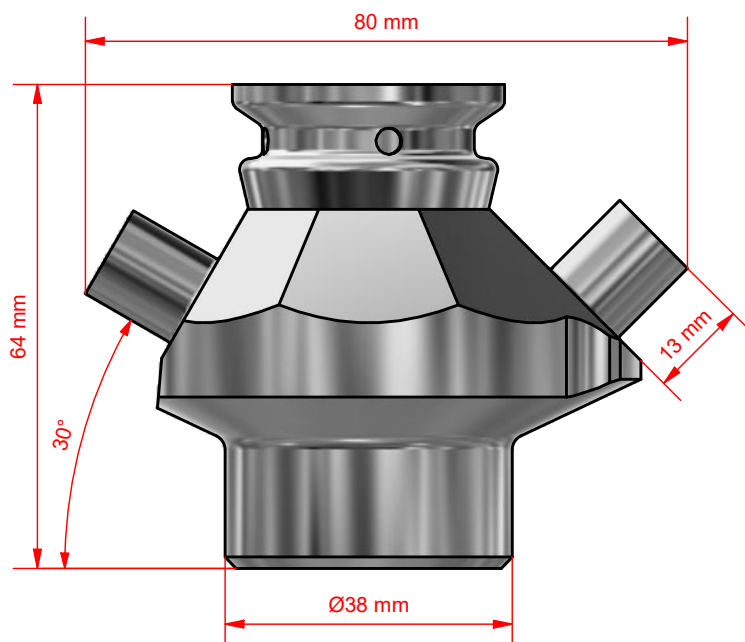
- Pressure Depending on choice of valve head
- Temperature Depending on choice of valve head
- Air supply Depending on choice of valve head

### Net Weight

- kg/lbs 0.621 kg/1.369 lbs

### Spareparts

- NOT APPLICABLE



"Patented: DK 175721 B1, CN 100501219C, EP 1 690 038 B1, US 7,658,201 B2"

\*For further information and download please visit [www.keofitt.dk](http://www.keofitt.dk)

KEOFITT A/S reserves the right to change technical data without notice! Valid version of the data sheets is available on [www.keofitt.dk](http://www.keofitt.dk).